

GREEN COUNTRY WATERCOLOR SOCIETY



Green Country Watercolor Society

PO Box 33435

Tulsa, OK 74153

Win Noren—[Contact](#)

Next Meeting: **March 13, 2025**

at **10:00 AM**

on the 2nd Thursday of the month

at Arts@302

302 South Main St., Broken Arrow.

Links

[Website](#)

[Facebook](#)

[Newsletter Archive](#)

From the President

It was great to see so many of you at our February meeting. As you will see in the newsletter there are many opportunities to get involved —member-led workshops, our upcoming member show, and workshops and gallery exhibitions around the region. I am also excited to welcome five new members: Dave, Michael, Diana, Kelly, and Marcy. We have a really great program scheduled for March so be sure to put the 10am March 13 GCWS meeting on your calendar today as you won't want to miss artist Becky Mannschreck sharing her "morning routine." Please invite someone to join you at our next meeting and don't forget... Go pick up that brush and paint!



MEMBER-LED WORKSHOP **INTUITIVE PAINTING, led by Dennis Crouch** **on March 15 from 10AM-2PM**

The cost is \$20 and must be paid by March 20th.
Checks should be made payable to GCWS and given to
JoAnn Kruger, PO Box 33435, Tulsa 74153

Cancellation Policy for Member-led Workshops: Your spot is reserved with payment. If you are unable to attend, you may transfer your spot to another GCWS member or opt for a 50% refund if cancellation notice is received by the Workshop Coordinator (Becky Brady) 48 hours before the start of the workshop.



Timeless City



February 13th Program



Swatch Supplies

A custom stamp has been created to support swatching out your watercolors that has a place to document the properties of the paint (color, brand, transparency, lightfastness, staining, pigments) and allow you to stamp on a variety of lengths of paper to see the full range of values that you can achieve with the paint.

To create the swatch “blanks” you need strips of your preferred watercolor paper, the stamp, a waterproof ink pad, and optionally an acrylic block for the stamp. If you want to store them in a protective sleeve, there is a longer and a shorter option both of which fit in a standard 8.5x11 inch binder.

- LONGER - will store 7 swatches that will be approximately 1.25 inches high by 7 inches long.
- SHORTER - will store 10 swatches that will be approximately 1.25 inches high by 5 inches long.

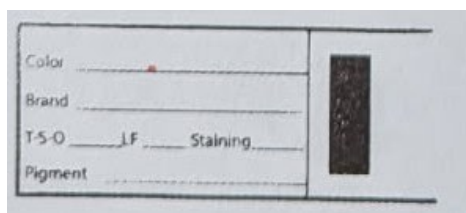
If you would like to order any of these swatch supplies, please contact Win Noren at 918-809-2334 or WinNoren@gmail.com and specify how many of each item you would like to order. Checks should be made payable to Win Noren.

Swatch Stamp = \$7.50

Waterproof Ink Pad = \$10.50

Acrylic Block = \$5.00

Storage Sleeves = \$0.30 each



GCWS Juried Show Checklist

Aqueous medium on watercolor appropriate support – IE: flat paint, no impasto, watercolor paint & pencil diluted acrylic, ink, or surface designed for watercolor – paper, board, canvas, etc.

Original – reference photo if used, must be artist’s own, artist chooses subject, composition lighting color palette, etc.

Minimum/Maximum size – outer edge of frame or cradle no less than 10X10 inches or larger than 48 X 48 inch.

Label – label with artist’s info supplied in prospectus attached to upper left rear.

FRAMED-

Frame- in good condition, tight corners, scrape and dent free, clean.

Glazing – must have glass or Plexiglas glazing, clean and smudge free.

Hanging wire – no sawtooth hangers, wire attached in upper 1/3 of frame, snug: that is tight, but still allowing fingers beneath wire to help hang. Firmly attached.

Dust cover – back of framed art must have paper dust cover attached. Metal poster frames are exempt but must have clean board backing of the artwork.

MAT(s) –

Single mat – clean, smudge free, white, off white, or palest gray or tan.

Double mat – second mat may be any color but no more than ¼ inch wide.

Without mat – must use spacers to prevent glazing from touching art surface.

CRADLE MOUNTED – cradle box wrapped or mounted watercolor paper or canvas.

Size – fits the same limits as minimum and maximum of framed artwork.

Depth (thickness) of cradle – side must be no less than 1.25 inch deep.

Sides finished – sides of cradle must be finished wood, painted, or artwork continuously wrapped from front of piece.

Sealed – artwork must be fully waterproof sealed. (GCWS is not responsible for damage caused by lack of protective seal.)

Label – same as for framed artwork.

Hanging wire – Same as for framed artwork.

March Program

The March Program will be presented by **Rebecca Mannschreck**. Rebecca is a professional artist working in several mediums throughout her 30-year career. Her subject matter ranges from florals to women. The flexibility to switch mediums allows her to express her subject matter often remarked upon as either being, “soft and subtle” to “bold and passionate.” The consistent remark though is, “I love her colors”.



Rebecca has shown her work in juried art shows and galleries throughout Oklahoma and the surrounding states. She has been awarded “Best of Show” although, she humbly recalls the time a youth chose to use the money he had saved to buy a Nintendo to purchase one of her painting instead, as being one of the greatest honors of her career.

Rebecca will be demonstrating her Morning Routine as she shares tidbits of garnished knowledge from her journey as an artist.

“I love to share my morning routine with fellow artist.

When practiced, creativity increases, skills develop,

and fear is replaced with joy.” RT

Rebecca will have a mixed media/gel plate workshop at WaterWorks March 14-15. You can follow this link for further information. [Rebecca Mannschreck Mixed Media Gel Plate Workshop — WaterWorks Art Center](#)



Painting Studio March 26 - 9:00 AM to Noon

A come and go open studio where you can bring projects to work on and get input from others.

paint • draw • visit • observe • learn • ask questions • show-and-tell • have fun

St. Pius X Church Activity Center

1727 S 75th East Ave. Tulsa

Meet the GCWS Secretary – Jane Holt

Jane Holt was raised in Tulsa where she graduated from Memorial High School, attended the University of Oklahoma and received her teaching certificate at the University of Tulsa. In the 80s, there was a need for Spanish teachers - even though she was more proficient in French - she taught 14 years in Broken Arrow and Tulsa Public high schools.

Jane's first endeavors in art were with oil, pastel, sculpture and ceramics which is quite a bit different way of thinking than painting with watercolor. She states that it was a fear from the lack of forgiveness that watercolor ensues that held her back. However difficult the medium was for her in the beginning- especially after working in oil, she feels pleased that she has accomplished something that was on her bucket list.

Jane has been a member of GCWS for the past seven years due to invitations and connections with instructors/friends in the group. After covid, Jane was asked to be secretary by the then president, Jim Buchan. And has served as secretary ever since.

Jane is happy to have this group since it is an economical way to grow with monthly demos, workshops as well as annual nationally-known artists' demonstrations. She agrees our group is made up of so many different levels of ability and appreciates the go-at-my-own pace. Jane states; "It is also a lot of fun to participate, stretch my abilities and get out of my comfort zone. I didn't participate in the shows because I didn't think my work was worthy, but I was challenged to get out of my comfort zone. Now, I am happy to be involved in all that is available."

Jane is married to a retired 20-year fire fighter. They enjoy traveling and seeing children and grandchildren frequently.





JERRY WADE

WATERCOLOR ARTIST



“After the Storm”

This peaceful country scene is from my childhood home in southern Illinois. This scene depicts a late fall day just after a rain storm has passed. The story is told with the dark cloud in the upper right corner moving away with rain still coming down behind the barn, the big puddle of water beside the big tree and the leaves on the ground around the puddle.

It can be a fun easy paint along with a limited palette and still learn some techniques that maybe you haven't tried before or help you refine some old techniques. I think it can be fun for the beginner without being too hard and some challenges for the more experienced watercolor artist.

I am not too concerned about the colors you use although I will suggest some that I will use. You can make it as colorful as you want. I have used a rather limited color palette but you might want to add your own colors. Violet, Magenta or Cobalt used in the right way can really add some life to the painting.

To create the rustic earthy feel of the barn and the foliage I will use Burnt Umber, Alizarin Crimson, Cad Red Light, Cad Orange, Yellow Ochre, Cad Yellow and Cad Red Deep. You might want to add more color to the fall leaves or the sky. I used a mixture of Cerulean Blue, Cobalt Blue and Prussian Blue and even deepened by a little Paynes Grey to add a little drama to it.

Here are the brushes I will be using

- A. Mop brush, for wetting large areas
- B. 3/4" chisel, for big strokes on the barn
- C. 1/2" chisel, for medium stroke on the barn
- D. 1/4" chisel, for boards and tin roof
- E. Scumble brush, for making grass and foliage
- F. Rigger brush, for the tree branches
- G. #10 Round, for detail on barn and leaves
- H. Scrubbing Brush, for removing or lightening

A B C D E F G H



Materials: Watercolor paper, Half sheet or Quarter sheet, 1" Artist tape or Masking fluid for the barn (*or if you are good enough you can paint the sky without masking around the barn*)
Other: Cup for water and paper towels.

I will be painting on a quarter sheet, size: 12" x 18". I will have a light table for you to trace the image. You are welcome to use whatever size you want. You can even use the back of an old painting that didn't turn out so good. Yes, you can recycle the back side. I suggest you trace the image before you come and even apply mask in the barn if possible to get off to a good start.

Most of all come and have fun and "Wet your brush". You don't have to finish your painting! I will be glad to critique but there is NO grade. You cannot fail this class.

Questions? Phone 918-361-4286, Email: Jerry@designok.com, Website: Designok.com

The cost is \$20 and must be paid by March 20th.
Checks should be made payable to GCWS and given to Jo-Ann Kruger, PO Box 33435, Tulsa 74153

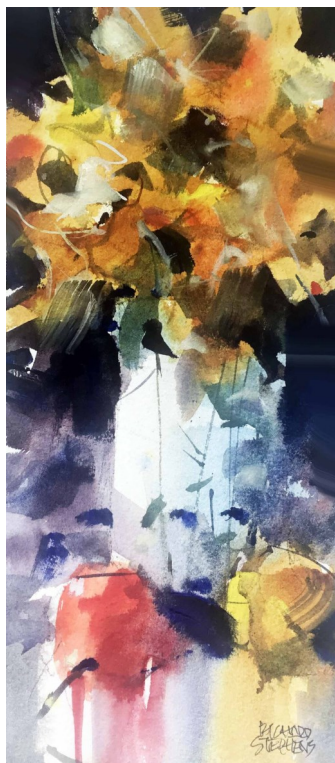
Cancellation Policy for Member-led Workshops: Your spot is reserved with payment. If you are unable to attend, you may transfer your spot to another GCWS member or opt for a 50% refund if cancellation notice is received by the Workshop Coordinator (Becky Brady) 48 hours before the start of the workshop.



“Lighten Up, Loosen Up”

August 20-21-22, 2025

Arts@302, 302 Main Street, Broken Arrow, OK 74012



Richard has a true passion for watercolor and enjoys the opportunity to share his knowledge and experience with students of all levels.

Taking a Richard Stephens workshop will be full of informative technical information, entertaining and educational painting demonstrations, and lots of one-on-one time as he helps you through your individual painting process.

A day starts with a short presentation on the “topic of the day” determined by the level and interest of the class. It is not so much a lecture as it is a conversation. Richard encourages feedback and questions as he feels we learn from each other, and that everyone has something important to share.

Richard will demo at least one complete painting demonstration a day. He constantly explains what he is doing, and more importantly, why. Most demonstrations last about an hour and the students learn techniques, creative use of the

“tools” of watercolor such as brush choice and manipulation, color mixing and the water/pigment relationship. There is always strong emphasis on the elements and principles of design.

After the demonstration the students will start on their own paintings or the class will work together on exercises designed to reinforce the theme, “Lighten Up, Loosen Up”. Richard offers individual advice as per subject selection, designing the image on the page and technique based on the unique style and goal of each student.

In summary, a Richard Stephens workshop is informative, challenging, and fun! It is not about competition or turning out a great painting during the workshop, it’s about being exposed to a process of watercolor painting that has been successful for him and might be

- Three-day workshop will be August 20-21-22 with an estimated cost of \$350
- A free evening seminar will be held August 21st at Hardesty Library Auditorium





Want to get to know your fellow members better? Just want to have a good cup of coffee or a pastry with artsy friends? Gather at 9:00 on Thursday, March 13th (before the March meeting) at **Laurannae**, located at **112 West Commercial Street, Broken Arrow**. You can park behind the Arts@302 building and walk north one block through the alley and be at the front door. Hope to see you there!

Name the Newsletter CONTEST WINNER!!

Jim Grisham's — "Brushstrokes" won!



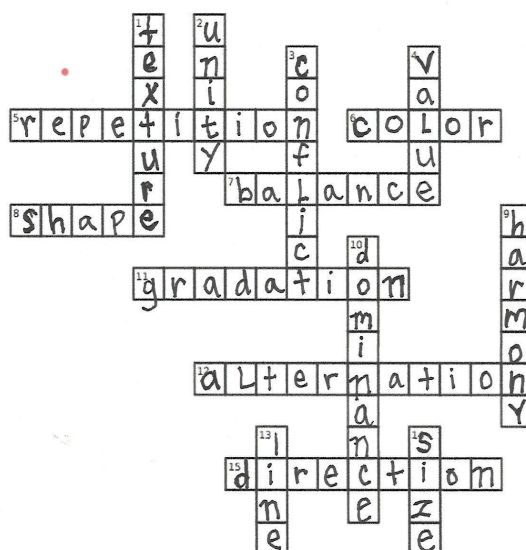
Jim received a \$50 gift certificate for Ziegler's Art & Frame in Tulsa.

Answers

to the
Crossword Puzzle
in February
Newsletter

Crossword Puzzle

ALL ABOUT DESIGN



Down:

1. rough, smooth, hard or soft
2. the first and foremost principle of art according to Edgar Whitney
3. tension between opposing elements
4. the mood of a painting can be set by a dominance of one of these
9. those elements that have affinity for each other
10. vital in a painting, resolves conflict
13. an all purpose tool unlimited in its variety
14. the relationship between these elements should be carefully planned

Across:

5. used for several reasons, among them to create visual rhythm
6. has three properties: hue, intensity, and value
7. may be either symmetric or asymmetric
8. anything that has height and width
11. The gradual transition from dark to light, hot to cold, smooth to rough
12. occurs between the repeats
15. May be horizontal, vertical or oblique

Programs – If you have suggestions or want to boldly volunteer to conduct a program, contact **Becky Brady: bradybecky01@gmail.com**

Newsletter – Please send information and news items for the newsletter to **Jeanette Hooks: j-jhooks@cox.net**

Facebook and Website – Please send items for the GCWS Facebook page and website to **Becky Brady: bradybecky01@gmail.com**



“Do you paint every day, or most days?”

Do you have any advice for staying motivated to paint daily?”

Answers from various artists in our group:

I paint most days. I usually paint in the evening as there are other events, people and activities that are part of the day! What motivates me is to read about artists that I admire, try new things, go to local Art Galleries and Shows and submit work for upcoming art shows. All those things keep me engaged in art.

I usually try to have two paintings going so I can pick one to paint on at any given time I try to paint several times a week but some days are just a glaze nothing more I promised myself and Jim Buchan I would paint several times a week even if it's just playing with a wash or glaze just to see the outcome I'm still consider myself a beginner in watercolor painting

No, I really don't paint every day. I also have trouble getting motivated. Part of the reason is that I have a house full of paintings that I can't get rid of, and I am too old to add to the stack! I don't mean to sound depressing but it's just life, so I paint when I want to, play golf, work in the yard and just do whatever I'm in the mood to do.

I do not paint every day. If I start a painting, I usually finish it within a few days spending several hours on the first day then maybe finishing it making minor revisions for the next few days for a few hour per day. I will start and stop and evaluate. I will sometimes just sit it up in my room and analyze it, walk away from it for a while. I always at least put a mat around it and often look at it framed and matted. I don't sign it until I am satisfied with the finished painting. My wife is a great critic and a huge help to me. She will give me honest feedback. Although she is not an artist, I really respect her taste in art and color.

I do not paint every day. I am thinking about it, but not actually painting. It's so difficult for me to get my paints out these days, but even when they were there ready to paint did I do it every day? NO. I look for inspiration. That is when I do my best painting when I'm inspired. My favorite picture was inspired when someone said, “that would be impossible to paint.”

Do I paint every day? I' love to fib and say yes, but the reality is that I paint 2 - 3 times a week. However, I do draw something every day, partly because it's so easy to grab a pencil or pen and quickly create something... and partly because, to me, drawing is like breathing. If I don't do it for too long, I'd turn blue and fall down! Painting daily is a goal I'm working towards. My best advice for daily motivation is to create a permanent and welcoming painting space, even if it's as tiny as a tray table in the corner. If your tools and paper are always ready and waiting, it only takes minutes to paint a bit. If you clean up and store away your supplies, it's too easy to feel you don't have enough time today to pull it all out again.

Upcoming Events

- ♦ March 13 —Watercolor Wakeup, 9AM at Lauranne
- ♦ March 13 —Monthly Meeting with program by Becky Mannschreck, 10AM
- ♦ March 15 —Dennis Crouch - Intuitive Painting 10AM to 2:00PM
- ♦ March 20 —Deadline for payment for Jerry Wade workshop
- ♦ March 28 —Jerry Wade After the Storm Workshop, 12-4PM

GCWS 21st ANNUAL JURIED MEMBER SHOW!

June 6th-30th, 2025

— Thomas K. McKeon Center for Creativity —
910 S Boston Ave. In Tulsa

**Set up will be Friday, June 6th at
10:00 A-H; 10:15 I-P; 10:30 Q-Z**



Nancy Harkins will be the juror for our show and will be at the reception to give a critique of the winners paintings. Harkinsfineart.com



Pic is Jo Lynch's — Best of Show 2024

—RECEPTION & ANNOUNCEMENT OF WINNERS—

Thursday, June 12th
4:00 to 6:00 p.m.



We are looking for GCWS 2025 sponsors!

**If you are seeing this and would like to donate to our
GCWS 21st Annual Members Show**

Please contact Terri Neil or Brenda Liekhus — Photosoflight@gmail.com

W GREEN COUNTRY **WATERCOLOR** SOCIETY



Member-Led WORKSHOPS

These almost-free workshops provide great opportunities to learn and expand your skills

March 15 - Dennis Crouch

Intuitive Painting

March 28 - Jerry Wade

After the Storm

June 28 - Kay Hays

Playful Techniques

July 25 - Jo Lynch

Landscapes

September 19 - Sherry Peters

Wet into Wet

For More Info:

hello@greencountryws.com

Cost - \$20 per workshop
open to all GCWS members



GCWS Board Members

OFFICERS

President — [Win Noren](#)

Vice President — [Becky Brady](#)

Treasurer — [JoAnn Krueger](#)

Secretary — [Jane Holt](#)

Members at Large — [Jim Buchan](#), [Jo Lynch](#), [Kay Hays](#), [Robert Freeman](#) & [Sherry Peters](#)

CHAIRS

Communications Chair — [Jim Grisham](#)

Library Chair — [Jim Buchan](#) & [Carolyn Morningstar](#)

Program Planning Chair — [Becky Brady](#)

Show Your Smalls Chair — [Jim & Donna Grisham](#)

Members Annual Show Chair — [Janet Weldeghebriel](#)

Workshop Chair — [Becky Brady](#)

OTHER POSITIONS

Art in the Square —

Name Tags — [Chris Bolley](#)

Newsletter — [Jeanette Hooks](#) & contributors

Painting Studio at St. Pius X — [Judy Gregg](#) & [Jo Lynch](#)

Publicity — [Mary Lee Weaver](#) & [Jim Grisham](#)

Show Awards — [Terri Neil](#) & [Brenda Leikhus](#)

Website & Facebook — [Becky Brady](#)



Please Note: Everyone is invited to the board meetings on the following dates—March 31, May 20, August 26, Nov. [TBA]



- ♦ **I Can't Workshop** Saturday March 8 10:00-10:45am free online class sponsored by McKeon Center for Creativity and the Sherwin Miller Museum of Jewish Art. [I Can't Watercolor with Sherwin Miller Museum of Jewish Art March 8](#)
- ♦ **Mixed Media Gel Plate Workshop** Friday March 14 & Saturday March 15 with Rebecca Mannschreck at WaterWorks Art Center. [Rebecca Mannschreck Mixed Media Gel Plate Workshop — WaterWorks Art Center](#)
- ♦ **Art of the Meal – Call for Artists by Arts@302** “Art of the Meal,” the April 2025 gallery exhibit, will feature artwork themed around food and the rich emotions that come with their creation and consumption. The exhibit will be on view at Arts@302 April 3rd-26th. **Deadline:** March 15th, 2025. [Art of the Meal: Call to Artists - Arts @ 302](#)

Dues are Due! Membership dues are a **modest \$35 annually** and your board members are working hard to make this small investment into your art a great value. If you have not already, **Please bring a check (made payable to Green Country Watercolor Society) or cash (exact change please) to the next meeting.** Checks may also be mailed to: GCWS PO Box 33435, Tulsa OK 74153.