

Next Meeting: **April 10, 2025**

at **10:00 AM**

on the 2nd Thursday of the month

at Arts@302

302 South Main St., Broken Arrow.

Green Country Watercolor Society

PO Box 33435

Tulsa, OK 74153

Win Noren—[Contact](#)

From the President

As all thirty-three of us who were at the March meeting can attest – it was a fabulous and inspiring program. We are also thrilled to welcome four new members this month: John, Mark, Sharon and Vicki. We have many activities scheduled that will provide opportunities for beginner, intermediate, and advanced artists. Our annual member show is fast approaching and I'm challenging you to join me in striving to have at least one piece to enter in this year's show. As we announced at the March meeting, the show which is co-sponsored by the Center for Creativity at Tulsa Community College will now be on exhibit for the months of June and July – a great opportunity to share our love of watercolor with the Tulsa community. Make plans to attend the April meeting, Jerry's workshop, or the painting studio this month and invite someone to come with you. Art is always better together and don't forget...go pick up that brush and paint!



Up For a Challenge?

What scares you with your watercolor painting? Is there a specific "thing" you avoid because the subject intimidates you? I was contemplating this recently when I found myself dreading the next step in the still life I was working on – a dish towel! Ewe, scary! Fabric is (one of) my scary things. The folds! The creases and shadows! But I wasn't going to just set it aside, like I sometimes do, because I really wanted to finish the piece to submit to the Arts@302 Art of the Meal Show. So, I watched some YouTube videos and dove in. It looks 'okay', but I want to get better. So, I've set a goal of painting fabric every day, or almost, for the next 20 days. Hopefully by the end of the 20 days painting a dishcloth or a tablecloth won't intimidate me. (Here's a link to the video I watched several times <https://www.youtube.com/watch?v=6tv-t6HMwSk>)

What "thing" gives you the shivers? What do you avoid painting because you think you can't do it?

By Becky Brady

WHAT'S IN MY PAINTBOX?

Most artists start with a set of paints and slowly add to it when they see an artist use a color that's appealing, is used well in a workshop, or received as a prize or gift. Eventually the question arises "what exactly do I have, and how to pick which to use on the current painting?". The answer is to curate your collection of paint tubes. Let's start with 2 major steps to accomplish this.



Step one: Check the labels on each tube for the **light fastness rating**. Companies use a numeric 1 - 4 or an Excellent, Very good, Fair, or Fugitive/Poor rating, or something similar. If not on the label, visit the company website for the listing. If you can't find one, which is common for student grade paints, it's likely the paints are fugitive. To avoid having some colors fade away from your painting, **keep only the tubes marked Excellent/1 or Very Good/2**. Fugitive colors fade, even if not in bright light, and may visibly alter the colors of your painting in as little as 2 or 3 years. Respect your own artistic efforts and use lasting paints.

Step two: Make a test swatch of each tube in your collection. (If you have an overwhelming number, start with those you tend to pick up every time you start a new piece). Use the type of paper you normally paint on. With a waterproof pen or marker, label it with the following information: Color name, Brand, T-S-O (Transparent, Semi transparent, Opaque), LF (light fastness rating), Staining (yes/no) and if desired, pigment used. Add a strip of solid black. An example is shown in the accompanying photo. For easy reference and storage, Win has created a system using film strip sleeve pages, watercolor paper strips, and a stamp of the informational label. Contact Win to acquire a stamp set and film sleeves, or take advantage of availability of a stamp at our monthly paint studio. On each paper slip paint a strip of one color, **starting fully color saturated, pass across the black stripe, then gradate out to nearly white**. Add a stripe of fully saturated color beyond the end of the gradient strip. Let the paint fully dry, then attempt to lift color from the saturated strip, using only a few strokes with a wet brush and a thirsty brush. This will show how easily you can lift the color, or if it is staining. Looking at the paint over the black stripe will show how transparent or opaque it is. The gradient will show how many levels of intensity you can create with this color alone and how much it tends to granulate. You can create your own pattern, as shown in photo 2, however this example lacks the ability to rearrange samples or add new ones in the same color family.



Creating the paint swatches will aid you in finding out which paints work best for your desired effects, identifying whether you have tubes from multiple manufacturers that repeat the same hue and/or transparency level, and thus provide suggestions for which paints you should remove from your paint box.

Order from Win (WinNoren@gmail.com or 918-809-2334)

Swatch Stamp = \$7.50 — Waterproof Ink Pad = \$10.50
Storage Sleeves = \$0.30 each — Acrylic Block = \$5.00

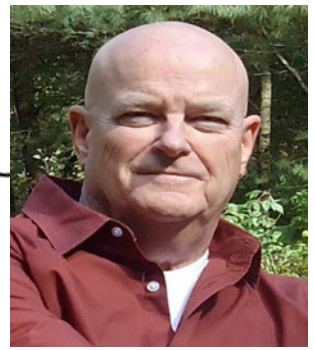


JERRY WADE

WATERCOLOR ARTIST

April 11th — 12:30-4:30

Hardesty Library Pecan meeting room. Hardesty address: 8316 E 93rd St.



“After the Storm”

This peaceful country scene is from my childhood home in southern Illinois. This scene depicts a late fall day just after a rain storm has passed. The story is told with the dark cloud in the upper right corner moving away with rain still coming down behind the barn, the big puddle of water beside the big tree and the leaves on the ground around the puddle.

It can be a fun easy paint along with a limited palette and still learn some techniques that maybe you haven't tried before or help you refine some old techniques. I think it can be fun for the beginner without being too hard and some challenges for the more experienced watercolor artist.

I am not too concerned about the colors you use although I will suggest some that I will use. You can make it as colorful as you want. I have used a rather limited color palette but you might want to add your own colors. Violet, Magenta or Cobalt used in the right way can really add some life to the painting.

To create the rustic earthy feel of the barn and the foliage I will use Burnt Umber, Alizarin Crimson, Cad Red Light, Cad Orange, Yellow Ochre, Cad Yellow and Cad Red Deep. You might want to add more color to the fall leaves or the sky. I used a mixture of Cerulean Blue, Cobalt Blue and Prussian Blue and even deepened by a little Paynes Grey to add a little drama to it.

Here are the brushes I will be using

- A. Mop brush, for wetting large areas
- B. 3/4" chisel, for big strokes on the barn
- C. 1/2" chisel, for medium stroke on the barn
- D. 1/4" chisel, for boards and tin roof
- E. Scumble brush, for making grass and foliage
- F. Rigger brush, for the tree branches
- G. #10 Round, for detail on barn and leaves
- H. Scrubbing Brush, for removing or lightening

A B C D E F G H



Materials: Watercolor paper, Half sheet or Quarter sheet, 1" Artist tape or Masking fluid for the barn (*or if you are good enough you can paint the sky without masking around the barn*) Other: Cup for water and paper towels.

I will be painting on a quarter sheet, size: 12" x 18". I will have a light table for you to trace the image. You are welcome to use whatever size you want. You can even use the back of an old painting that didn't turn out so good. Yes, you can recycle the back side. I suggest you trace the image before you come and even apply mask in the barn if possible to get off to a good start.

Most of all come and have fun and “Wet your brush”. You don't have to finish your painting! I will be glad to critique but there is NO grade. You cannot fail this class.

Questions?

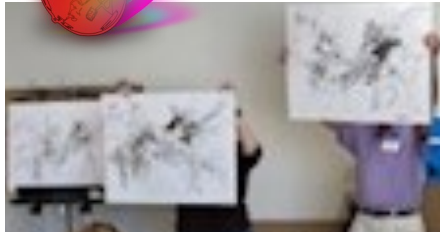
Phone 918-361-4286, Email: Jerry@designok.com, Website: Designok.com

Cancellation Policy for Member-led Workshops: Your spot is reserved with payment of \$20. If you are unable to attend, you may transfer your spot to another GCWS member or opt for a 50% refund if cancellation notice is received by the Workshop Coordinator 48 hours before the start of the workshop. **Becky Brady:** bradybecky01@gmail.com



March 13th Program

"I love to share my morning routine with fellow artist. When practiced, creativity increases, skills develop, and fear is replaced with joy."



Becky's talent is a gift from God, but the best blessing she has received comes from a mother who nurtured her, a friend who encouraged her, and a husband who supports her.

Becky discovered herself as an artist when she gave up trying to be a perfectionist and loosened up with a sure-fire method of drawing with charcoal and water while listening to three types of music: light, uplifting, and finally a little dark. It's amazing what she can accomplish during just one song. Literally, she is finished with one of her exercises in just three or four minutes. The music is her inspiration. Through this she has found a way to free her mind and express herself without inhibition. Spontaneous, bold, and finishes with full color. In a nutshell, she uses music in a very specific way to "grease the wheels" and arrive at a starting point for her creative day.



The March program was SIMPLY FABULOUS! If you missed it, maybe you can sign up for her class in the future. Jennifer with Arts@302 is trying to get Becky back for a larger workshop. The workshop is guaranteed to not disappoint.



Rebecca will have a mixed media/gel plate workshops in the future. You can follow this link for further information. [Rebecca Mannschreck Mixed Media Gel Plate Workshop — WaterWorks Art Center](#)

Programs – If you have suggestions or want to boldly volunteer to conduct a program, contact **Becky Brady: bradybecky01@gmail.com**

Newsletter – Please send information and news items for the newsletter to **Jeanette Hooks: j-jhooks@cox.net**

Facebook and Website – Please send items for the GCWS Facebook page and website to **Becky Brady: brady-becky01@gmail.com**



APRIL 13TH PROGRAM

WITH NANCY HARKINS

Our April program will feature local artist Nancy Harkins, who will also be the judge of our Member Show this June.

Strong value contrasts and patterns of light and shadow in Nancy's landscapes and architectural subjects have won her awards in numerous exhibitions. We're very fortunate that she's agreed to give us a demo at our April meeting.

Nancy says, *"For me, the beauty of creation requires a response—even an involvement—that compels me to explore with eye and brush the shapes, contrasts, and moods so lovingly arranged by our Creator. My work is worship offering back to the Lord of all."*



Check out her website harkinsfineart.com

Program? Anyone have a Program?

We have 3 program opportunities coming up —
July, September, & October.

Do you have something you'd like to share with the group? Maybe a couple of you have discussed an idea? If so, please contact Becky at bradybecky01@gmail.com. Thank you!

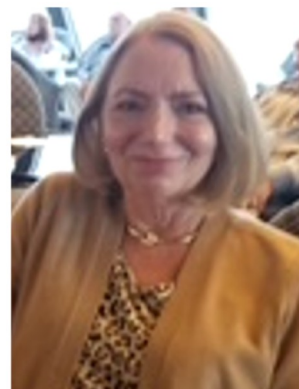


Meet the GCWS Treasurer – JoAnn Krueger



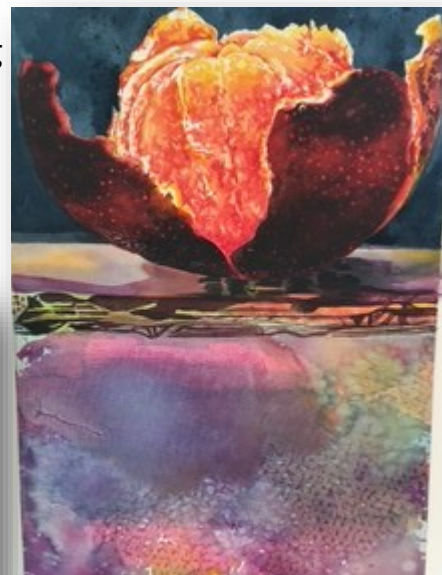
JoAnn was born and raised in Butler, Pennsylvania. She graduated from college with a degree in science and moved to Sarasota, FL where she met and married her husband.

JoAnn's young family moved to Tulsa in 1986 for her husband's work. She discovered Ross Myers who instructed her in pastels and watercolor off and on for ten years. Upon retirement as an account manager for Regional Medical Laboratories, she found GCWS through a Sue Archer workshop.



JoAnn Krueger

JoAnn says, "Art in its many forms has always been part of my life from drawing lessons as a child, three years of high school art to visiting galleries. These days I've enjoyed membership and volunteering for over eleven years! I have served the following positions: Secretary, Workshop Chair and currently Treasurer."



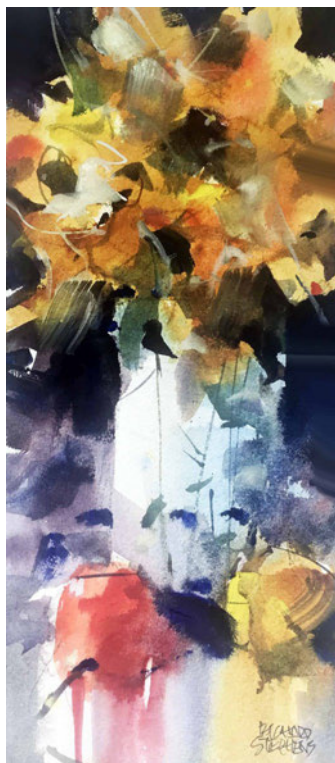
Want to get to know your fellow members better? Just want to have a good cup of coffee or a pastry with artsy friends? Gather at 9:00 on Thursday, April 10th (before the April meeting) at **Laurannae**, located at **112 West Commercial Street, Broken Arrow**. You can park behind the Arts@302 building and walk north one block through the alley and be at the front door. Hope to see you there!



“Lighten Up, Loosen Up”

August 20-21-22, 2025

Arts@302, 302 Main Street, Broken Arrow, OK 74012



Richard has a true passion for watercolor and enjoys the opportunity to share his knowledge and experience with students of all levels.

Taking a Richard Stephens workshop will be full of informative technical information, entertaining and educational painting demonstrations, and lots of one-on-one time as he helps you through your individual painting process.

A day starts with a short presentation on the “topic of the day” determined by the level and interest of the class. It is not so much a lecture as it is a conversation. Richard encourages feedback and questions as he feels we learn from each other, and that everyone has something important to share.

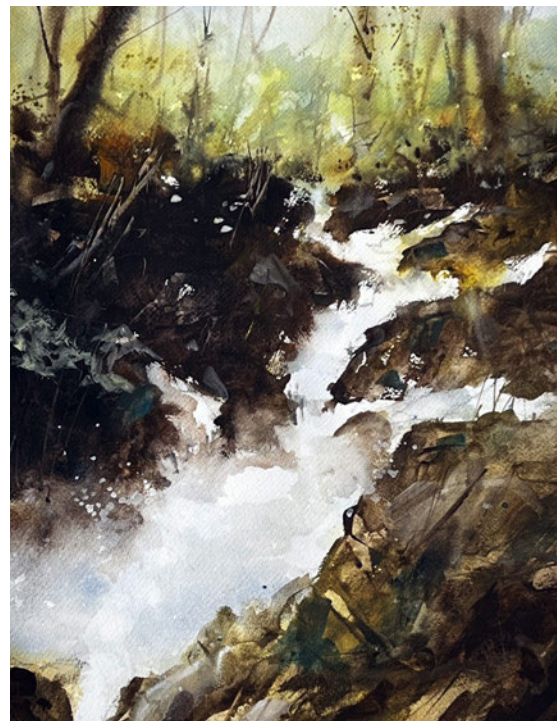
Richard will demo at least one complete painting demonstration a day. He constantly explains what he is doing, and more importantly, why. Most demonstrations last about an hour and the students learn techniques, creative use of the

“tools” of watercolor such as brush choice and manipulation, color mixing and the water/pigment relationship. There is always strong emphasis on the elements and principles of design.

After the demonstration the students will start on their own paintings or the class will work together on exercises designed to reinforce the theme, “Lighten Up, Loosen Up”. Richard offers individual advice as per subject selection, designing the image on the page and technique based on the unique style and goal of each student.

In summary, a Richard Stephens workshop is informative, challenging, and fun! It is not about competition or turning out a great painting during the workshop, it’s about being exposed to a process of

- **Three-day workshop will be August 20-21-22 with a cost of \$350—non-members \$400**
- **Registration will open when an email is sent out to you.**
- **A free evening seminar will be held August 21st at Hardesty Library Auditorium**





DENNIS CROUCH WORKSHOP

comments from those who attended



Left to right: Dennis Crouch, Denise Blair, Judy Aldridge, Robert Freeman, Sherri Doe, Jim Grisham, Becky Brady, Diane Droge, Mary Lee Weaver, Jim Owens. Attended but not shown: Cris Bolley, Janet Weldeghebriel, Jerry Wade, Jim Buchan

I want to thank each one of the GCWS artists who participated in this workshop. I had a fantastic time collaborating with incredibly talented artists as we delved into the creative world of intuitive abstract painting. This form of painting starts without any preconceived notions about the final outcome, allowing the artist's intuition to lead the way.

We kicked off our process by swiftly and randomly sketching ink lines and marks on the paper, then applied water-based paint, letting the medium dictate our direction without aiming for a specific goal. This freedom encouraged us to experiment and use various objects and techniques to apply the paint, enhancing our creative exploration. It was truly gratifying to see the diverse range of completed compositions.

Dennis Crouch



Jim Grisham appreciated and learned that impromptu painting is not dictated by subject but by creativity using a variety of materials to create textures combined with color. It was a great stress reliever.



Robert said, "Dennis inspired us to respond to what's on our paper and not what's in our head. With no expectations of the outcome. Once you start, you can develop what it's becoming."



Becky learned a new way of applying paint onto the paper with a roller brush and plastic!





Our library is a great resource

— we want you to use it!

- ◆ Please look for books you have checked out and still have at home.
- ◆ Returns should be placed in the box on/near the cart. Use the sticky notes near the box to write your name and place it inside the cover.



Recommendations From Our Library

At our March meeting Robert Freeman donated two DVDs by Marc Taro Holmes, “*Travel Sketching in Mixed Media*” and “*Sketching People in Motion*”. Both are excellent and I found a preview very informative.

Mr. Holmes approach was that of speed, simplification, and confidence when starting a new drawing. He begins with a simple sketch then takes the viewer through 30 minute lessons through how to add color and then challenges you to try it.

A quote of his that I could relate to from my own travels was, “*If I come away with this drawing then I will remember what is there.*” He demonstrated how to break the world down into lines, gave an alternative way to think about the drawing, and how to add color to bring the sketches to life.

From his suggestions and demonstrations, I plan to make an accordion style travel journal and to try capturing multiple people on my street scenes.

Carolyn Morningstar



Upcoming Events

- ◆ April 10 —Watercolor Wakeup, 9AM at Lauranne
- ◆ April 10 —Monthly Meeting with Nancy Harkins as our program— 10AM
- ◆ April 11 —Jerry Wade’s workshop at 12:30-4:30 —Hardesty Library Pecan meeting room. Hardesty address: 8316 E 93rd St.

Painting Studio April 23 - 9:00 AM to Noon

A come and go open studio where you can bring projects to work on and get input from others.

paint • draw • visit • observe • learn • ask questions • show-and-tell • have fun

St. Pius X Church Activity Center
1727 S 75th East Ave. Tulsa

GCWS 21st ANNUAL JURIED MEMBER SHOW!

June 6th — July 31st, 2025

— *Thomas K. McKeon Center for Creativity* —
910 S Boston Ave. In Tulsa

**Set up will be Friday, June 6th at
10:00 A-H; 10:15 I-P; 10:30 Q-Z**



Nancy Harkins will be the juror for our show and will be at the reception to give a critique of the winners paintings.
Harkinsfineart.com



Pic is Jo Lynch's — Best of Show 2024

Reception & Announcement of Winners

**Thursday, June 12th
4:00 to 6:00 p.m.**

Please support our 2025 sponsors!

Please contact Terri Neil or Brenda Liekhus — Photosoflight@gmail.com



® used under license from Mohawk Fine Papers Inc.



W GREEN COUNTRY **WATERCOLOR** SOCIETY



Member-Led WORKSHOPS

These almost-free workshops provide great opportunities to learn and expand your skills

April 11 - Jerry Wade

After the Storm

June 28 - Kay Hays

Playful Techniques

July 25 - Jo Lynch

Landscapes

September 19 - Sherry Peters

Wet into Wet

November TBD - Jim Buchan

Christmas Card

For More Info:

hello@greencountryws.com

Cost - \$20 per workshop
open to all GCWS members



GCWS Board Members

OFFICERS

President — [Win Noren](#)

Vice President — [Becky Brady](#)

Treasurer — [JoAnn Krueger](#)

Secretary — [Jane Holt](#)

Members at Large — [Jim Buchan](#), [Jo Lynch](#), [Kay Hays](#), [Robert Freeman](#) & [Sherry Peters](#)

CHAIRS

Communications Chair — [Jim Grisham](#)

Library Chair — [Jim Buchan](#) & [Carolyn Morningstar](#)

Program Planning Chair — [Becky Brady](#)

Show Your Smalls Chair — [Jim](#) & [Donna Grisham](#)

Members Annual Show Chair — [Janet Weldeghebriel](#)

Workshop Chair — [Becky Brady](#)

OTHER POSITIONS

Art in the Square —

Name Tags — [Chris Bolley](#)

Newsletter — [Jeanette Hooks](#) & contributors

Painting Studio at St. Pius X — [Judy Gregg](#) & [Jo Lynch](#)

Publicity — [Mary Lee Weaver](#) & [Jim Grisham](#)

Show Awards — [Terri Neil](#) & [Brenda Leikhus](#)

Website & Facebook — [Becky Brady](#)



Please Note: Everyone is invited to the board meetings on the following dates— May 20, August 26, Nov. [TBA]



- ♦ “Art of the Meal,” the April 2025 gallery exhibit, will feature artwork themed around food and the rich emotions that come with their creation and consumption. The exhibit will be on view at Arts@302 April 3rd-26th
- ♦ Amy Jenkins’ first solo show will be August 2025 at the **Lyon Gallery** in the **Bartlesville Community Center**. The reception is **Friday, August 15 from 5:30-7:30 pm** and I’d love to see my friends from Green Country there.

Please NOTE: Submission's to the Green Country Art Beat can be made to Win Noren— WinNoren@gmail.com or Jeanette Hooks— j-jhooks@cox.net



A big shout of "thanks" to Dennis Crouch for designing the Brushstrokes logo for the newsletter!

Dues are Due! Membership dues are a **modest \$35 annually** and your board members are working hard to make this small investment into your art a great value. If you have not already, **Please bring a check (made payable to Green Country Watercolor Society) or cash (exact change please) to the next meeting.** Checks may also be mailed to: GCWS PO Box 33435, Tulsa OK 74153.